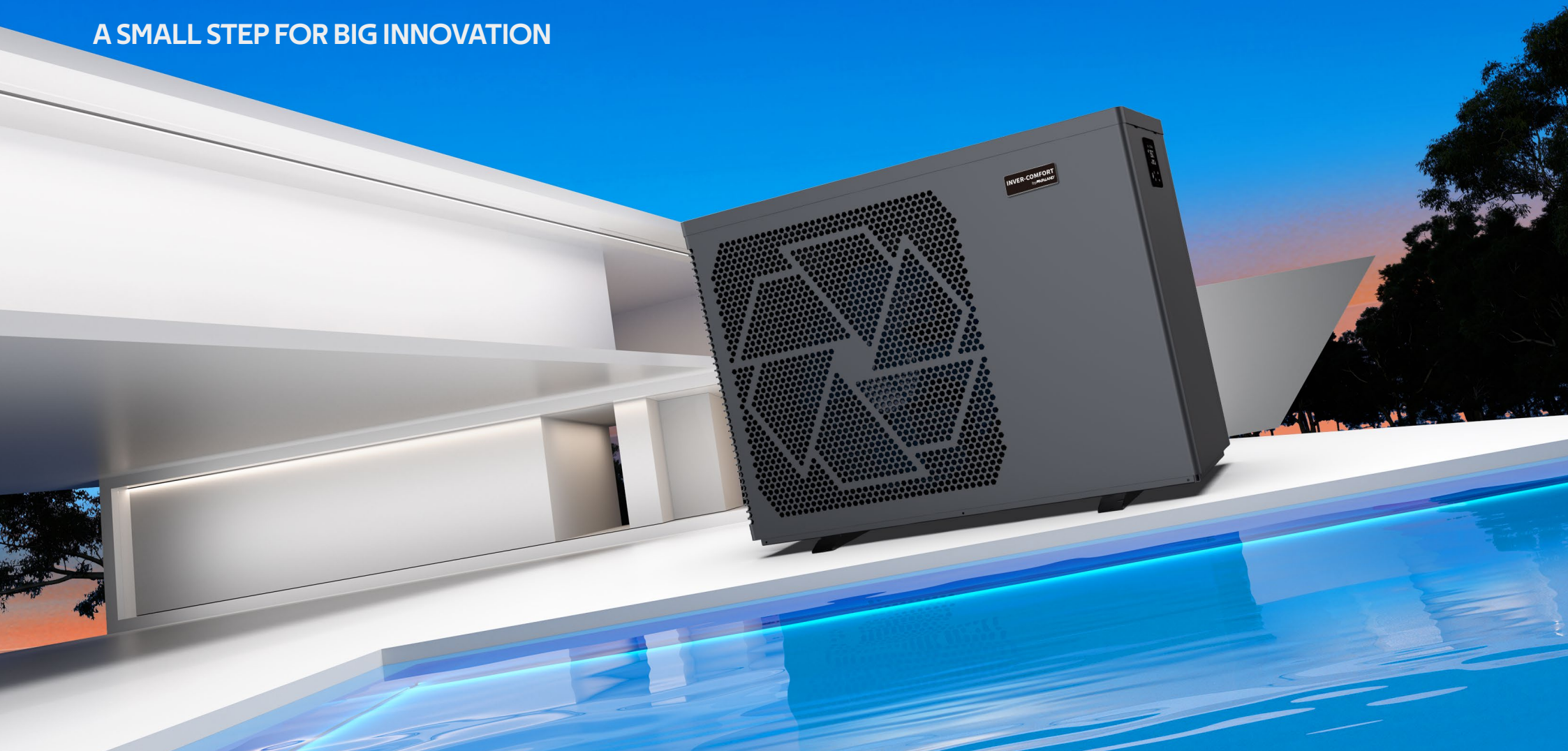


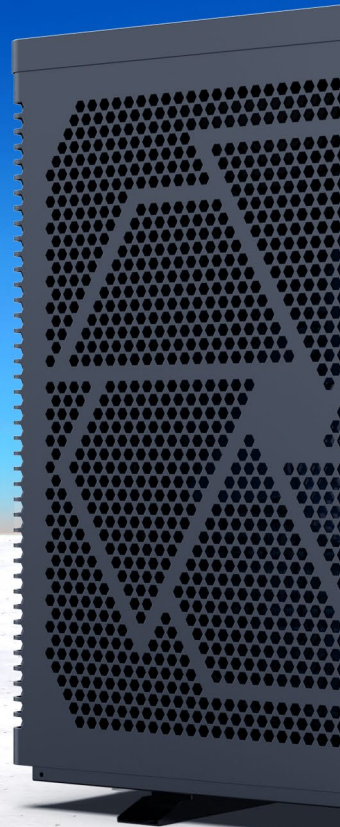
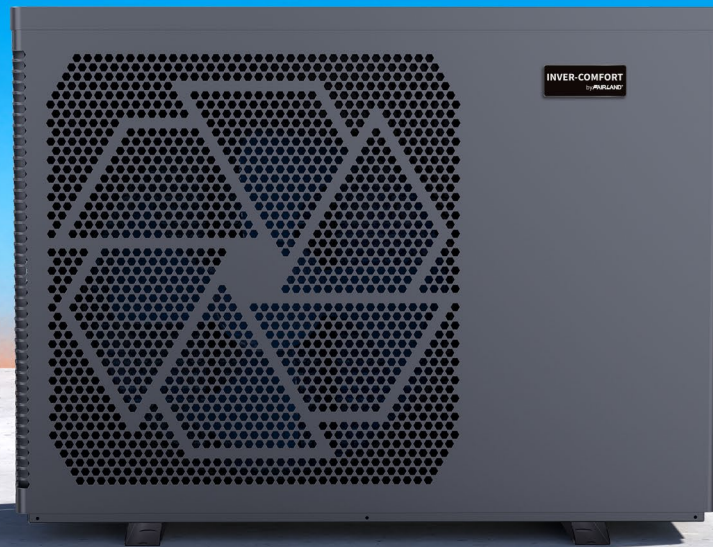
COMFORTLINE PRO

A SMALL STEP FOR BIG INNOVATION



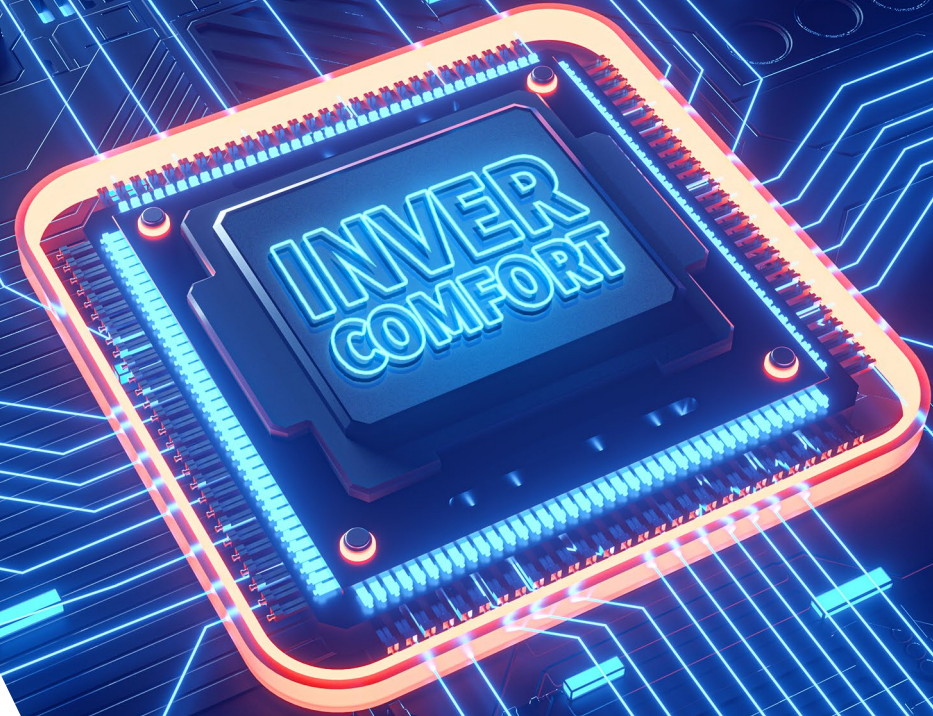
LOVE THE PERFORMANCE

love the cost-effective



THE ORIGINAL FULL-INVERTER TECHNOLOGY

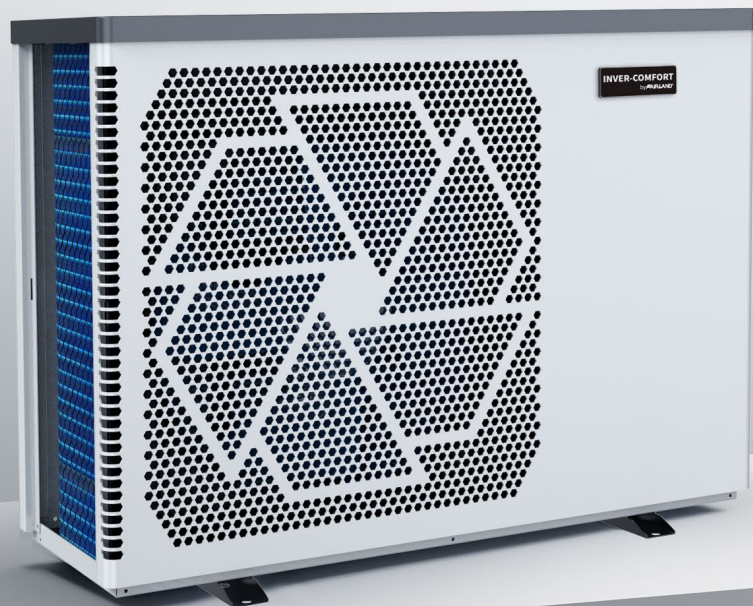
Full-inverter technology drives the DC-inverter twin-rotary compressor hertz-by-hertz and runs the DC-inverter brushless fan motor round-by-round to achieve the optimum performance. At the beginning of the swimming season, Full-inverter pool heat pumps will heat the pool water to the set temperature at 100% heating capacity and then maintain the required temperature at an averagely of 30% of power consumption.





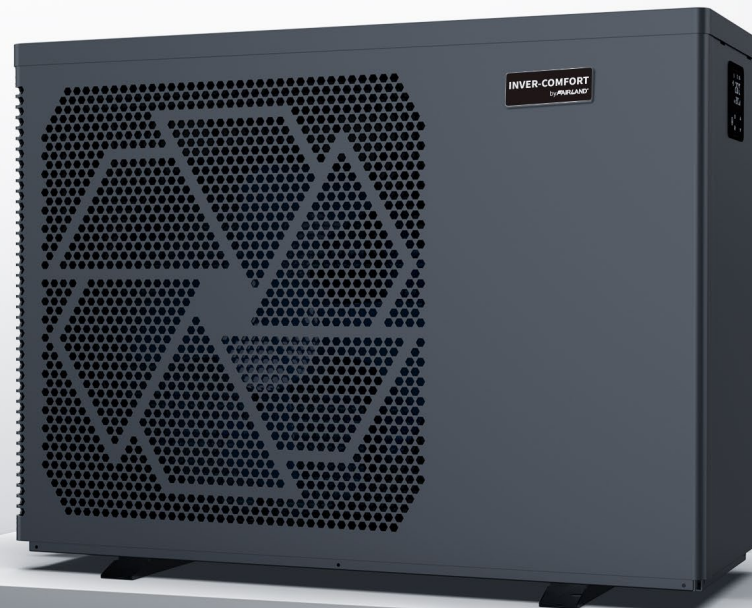
Up to **13**x Energy Saving

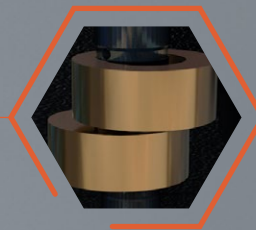
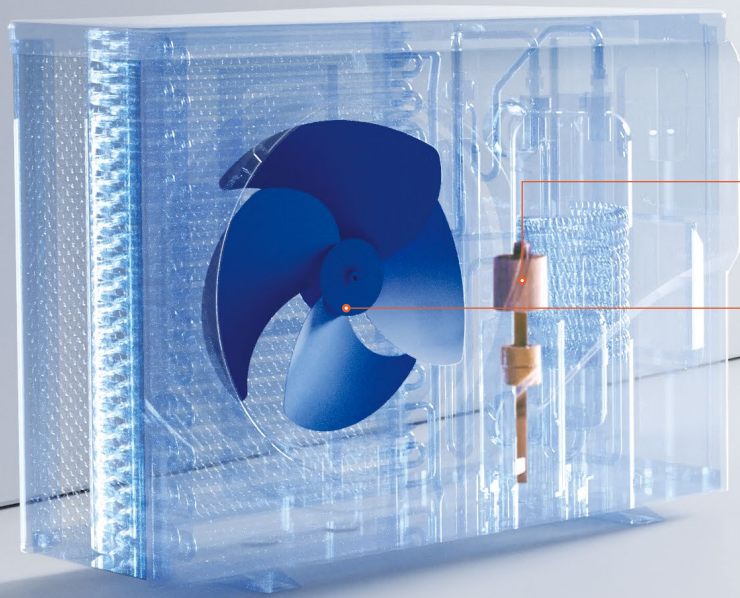
COP 13: 1kW Input = 13kW Heat in Return



Average **8** Times Quieter

Average noise level 48dB(A)

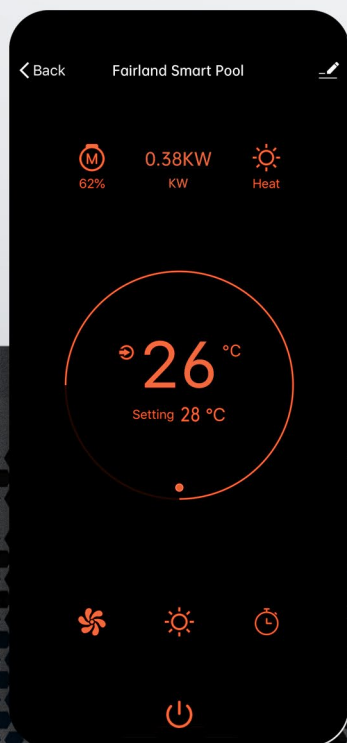




Twin-Rotary Compressor



DC-inverter Brushless Fan Motor



Free Built-in Wi-Fi

Remote control anytime & anywhere with Fairland Smart Pool App.



Soft Start

The current will start from 0A and go up slowly to the rated current in 2 minutes after turning on the heat pump

SPECIFICATIONS OF INVER-COMFORT



Model	NPR07	NPR09	NPR11	NPR13	NPR17	NPR21
Advised pool volume (m3)	15~30	20~40	25~50	30~60	40~75	50~90
Operating air temperature (°C)	0~43°C					
Performance Condition: Air 26°C, Water 26°C, Humidity 80%						
Heating capacity (kW)	7.0	9.0	11.0	13.0	16.5	20.5
COP	12.1~7.2	12.6~7.0	12.7~7.0	13.2~7.0	12.3~7.1	12.9~6.5
COP at 50% capacity	9.5	10.5	10.1	10.4	9.9	10.3
Performance Condition: Air 15°C, Water 26°C, Humidity 70%						
Heating capacity (kW)	5.0	6.3	7.8	9.2	11.2	14.2
COP	6.4~4.8	6.8~4.7	6.8~4.9	7.0~5.0	6.8~4.6	7.1~4.3
COP at 50% capacity	5.9	6.0	6.4	6.3	6.2	6.2
Sound pressure at 1m dB(A)	39.4~51.3	40.3~51.0	40.0~52.4	41.9~52.9	44.3~56.1	44.5~57.0
Sound pressure of 50% capacity at 1m dB(A)	43.4	43.3	45.5	48.0	48.2	49.3
Sound pressure at 10m dB(A)	19.4~31.3	20.3~31.0	20.0~32.4	21.9~32.9	24.3~36.1	24.5~37.0
Heat exchanger	Spiral titanium tube in PVC					
Casing	Aluminum Alloy Casing					
Net weight (kg)	42	46	47	49	60	68
Qty per 20'FT / 40'HQ (sets)t	114/252	102/216	102/216	102/216	90/198	60/198